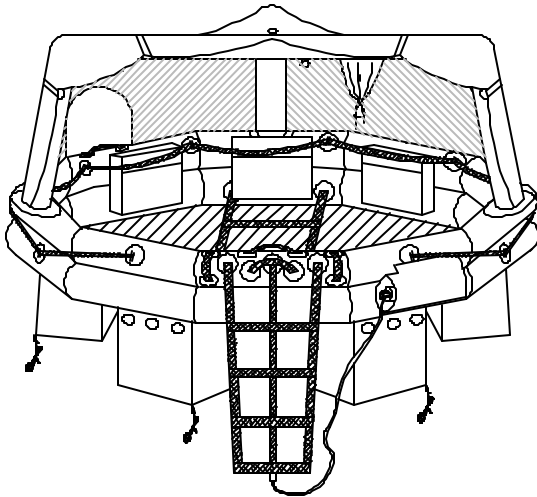
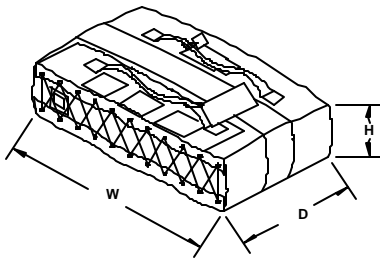


STANDARD EQUIPMENT Includes:

- CO₂/N₂ Inflation System w/ Twin Oversized Buoyancy Tubes
- Three (3) Position (Closed, Sail & Convertible) Light Weight Canopy w/ Cinch Strap
- Sure-Seal™ Closures w/ #10 YKK Heavy Duty Zippering
- Dual Main Zipper w/ Ventilation Tie Backs
- Tripod Arch, Auto Inflatable, Canopy Support System w/ Stay Erect Arch Support Valve System
- Oversized Front Boarding Entry w/ 4 Rung Boarding Ladder
- Interior Assist Ladder w/ Quick-Release Fittings
- Rear Boarding Door w/ 3 Rung Boarding Ladder
- Five (5) Bowed Boarding Assist Handles
- Combination Foul Weather Observation Port Hole & Water Collection System w/ Sure-Seal™ Closures
- I2DF™ Inflatable Insulated Double Floor
- Water Activated Interior/Exterior Survivor Locator Lights
- Quick-Grab™ Pelican® Super MityLite™ Flashlight On Arch
- Auto-Deploying Hemispherical Drogue (Sea-Anchor) w/ 25' Line & Dual Anti-Foul Swivels
- 75' Floating Heaving Trailing Line w/ Buoyant Throwing Handle
- 35' Painter Line w/ Quick-Release Fittings
- Heavy Duty EZGrip™ Righting Line w/ Contrasting Bowed Hand Grips
- Unidirectional Retro/Radar Reflective Segment Across Arch
- Unidirectional Retro Reflective Segments Under Life Raft & On Canopy
- Pentagonal Ballast System™
- 1" Exterior Lifelines & Interior Grasp Lines
- Five (5) StoreSafe™ Light Weight Dry Survival Gear Storage Pockets
- Pressure Relief Valves
- Topping-Up Valves
- Urethane Valise



NOT TO SCALE



Part 91 & 121 SEP Kit Includes:

- ① Manual Inflation Pump – Spring Loaded Return w/ Adapter
- ① Raft Knife
- ① Repair Kit (Includes: Repair Tape, Repair Clamp (3") & 2 PRV Plugs w/ Tether)
- ① Collapsible Bailer Bucket w/ Handle
- ② Sponges
- ① Signal Mirror
- ① Rescue Streamer™ High Visibility Ribbon (6" X 25')
- ① USCG/SOLAS Whistle
- ① Oral Inflation Tube
- ① Extended Life Flashlight (Sealed Case)
- ② Spare Alkaline Batteries & Spare Super MityLite™ Xenon Bulb Assembly
- ③ USCG Aerial Meteor Flares
- ① USCG Hand Held Locator Flare
- Food Ration Bars (250 Cal./Person)
- Anti-Seasickness Tablets (6/Person)
- ① Utility Knife (SS Lockback)
- ① Retaining Line (75')
- ① Survival Manual
- ① Bible
- ① Survivor® "06" Watermaker

Part 135 SEP Kit Includes 91/121 Plus:

- ① Fishing Kit
- Food Ration Bars (1750 Cal./Person)
- ① Sea-Dye Marker
- ① Water Storage Bag
- ① Magnetic Compass
- ② Paddles w/ Retro Reflective Segments
- ① First Aid Kit: [First Aid/Burn Cream Packets (12), Antiseptic Towelettes (10), 1" X 3" Adhesive Strips (16), Nitrile Gloves (1 pair), Sterile Triangular Bandage, 4" Bandage Compress, First Aid Guide]

JAR-OPS1 SEP Kit Includes 91/121 Plus:

- ⑤ Additional USCG Aerial Meteor Flares
- ① Additional USCG Hand Held Locator Flare
- ① Water Storage Bag
- 6 Mil Poly Bags (1/Person)
- Food Ration Bars (2000 Cal./Total)
- ① First Aid Kit [Sun block (30SPF), Magnifier, Thermal Blanket, 4" Bandage Compress (4), Sterile Triangular Bandage (2), 2" Bandage Compress (12), Nitrile Gloves (1 pair), Antiseptic Towelettes (10), First Aid/Burn Cream Packets (12), 1" X 3" Adhesive Strips (16), Adhesive Tape, First Aid Guide]

JAR-OPS1/135 SEP Kit Includes 91/121 & JAR-OPS1 Plus:

- ① Fishing Kit
 - Food Ration Bars (1750 Cal./Person)
 - ① Sea-Dye Marker
 - ① Magnetic Compass
 - ② Paddles w/ Retro Reflective Segments
- ### CAR SEP Kit Includes 91/121 Plus:
- ① Fishing Kit
 - ① First Aid Kit (Same as FAR Part 135)
 - ① Sea-Dye Marker
 - ① Magnetic Compass
 - ② Paddles w/ Retro Reflective Segments

ELT Options:

- Dual Frequency Survival (S) Type ELT, (121.5/243.0MHz) 0.8 lbs.
FAA TSO-C91a
- Triple Frequency Survival (S) Type ELT, (121.5/243.0/406MHz) w/ full Speech Capability on 121.5/243MHz - 1.3 lbs.
FAA TSO-C91a and C126

Please Note: ELT Requirements May Vary

Custom Dimensional Packing Available

(800) 838-3012 ~ Fax (941) 613-6677
www.winslowliferaft.com ~ rafts@winslowliferaft.com

Ultra-Light™ FA-AV (UL) Valise Pack

Winslow Model	SEP Requirements	Dimension H X D X W	Total Weight	WINSLOW Part Number
46FAUL Capacity 4 Ovid. Capacity 6	FAR PART 91 & 121	8" X 17" X 26"	33 lb.	46FAUL-*190-1-100
	FAR PART 135	8" X 17" X 26"	38 lb.	46FAUL-*130-1-100
	JAR-OPS1	8" X 17" X 26"	38 lb.	46FAUL-*1J0-1-100
	JAR-OPS1/135	8" X 17" X 26"	43 lb.	46FAUL-*1K0-1-100
57FAUL Capacity 5 Ovid. Capacity 7	FAR PART 91 & 121	8" X 17" X 27"	34 lb.	57FAUL-*190-1-100
	FAR PART 135	8" X 17" X 27"	39 lb.	57FAUL-*130-1-100
	JAR-OPS1	8" X 17" X 27"	39 lb.	57FAUL-*1J0-1-100
	JAR-OPS1/135	8" X 17" X 27"	44 lb.	57FAUL-*1K0-1-100
69FAUL Capacity 6 Ovid. Capacity 9	FAR PART 91 & 121	8" X 17" X 28"	46 lb.	69FAUL-*190-1-100
	FAR PART 135	8" X 17" X 28"	52 lb.	69FAUL-*130-1-100
	JAR-OPS1	8" X 17" X 28"	50 lb.	69FAUL-*1J0-1-100
	JAR-OPS1/135	8" X 17" X 28"	57 lb.	69FAUL-*1K0-1-100
710FAUL Capacity 7 Ovid. Capacity 10	FAR PART 91 & 121	8" X 17" X 29"	47 lb.	710FAUL-*190-1-100
	FAR PART 135	8" X 17" X 29"	53 lb.	710FAUL-*130-1-100
	JAR-OPS1	8" X 17" X 29"	51 lb.	710FAUL-*1J0-1-100
	JAR-OPS1/135	8" X 17" X 29"	58 lb.	710FAUL-*1K0-1-100
812FAUL Capacity 8 Ovid. Capacity 12	FAR PART 91 & 121	8" X 18" X 33"	49 lb.	812FAUL-*190-1-100
	FAR PART 135	8" X 18" X 33"	57 lb.	812FAUL-*130-1-100
	JAR-OPS1	8" X 18" X 33"	54 lb.	812FAUL-*1J0-1-100
	JAR-OPS1/135	8" X 18" X 33"	62 lb.	812FAUL-*1K0-1-100
913FAUL Capacity 9 Ovid. Capacity 13	FAR PART 91 & 121	8" X 18" X 34"	50 lb.	913FAUL-*190-1-100
	FAR PART 135	8" X 18" X 34"	58 lb.	913FAUL-*130-1-100
	JAR-OPS1	8" X 18" X 34"	55 lb.	913FAUL-*1J0-1-100
	JAR-OPS1/135	8" X 18" X 34"	63 lb.	913FAUL-*1K0-1-100
1015FAUL Capacity 10 Ovid. Capacity 15	FAR PART 91 & 121	9" X 18" X 32"	54 lb.	1015FAUL-*190-1-100
	FAR PART 135	9" X 18" X 32"	63 lb.	1015FAUL-*130-1-100
	JAR-OPS1	9" X 18" X 32"	61 lb.	1015FAUL-*1J0-1-100
	JAR-OPS1/135	9" X 18" X 32"	68 lb.	1015FAUL-*1K0-1-100
1116FAUL Capacity 11 Ovid. Capacity 16	FAR PART 91 & 121	9" X 18" X 32"	55 lb.	1116FAUL-*190-1-100
	FAR PART 135	9" X 18" X 32"	64 lb.	1116FAUL-*130-1-100
	JAR-OPS1	9" X 18" X 32"	62 lb.	1116FAUL-*1J0-1-100
	JAR-OPS1/135	9" X 18" X 32"	70 lb.	1116FAUL-*1K0-1-100
1218FAUL Capacity 12 Ovid. Capacity 18	FAR PART 91 & 121	9" X 18" X 32"	61 lb.	1218FAUL-*190-1-100
	FAR PART 135	9" X 18" X 32"	72 lb.	1218FAUL-*130-1-100
	JAR-OPS1	9" X 18" X 32"	66 lb.	1218FAUL-*1J0-1-100
	JAR-OPS1/135	9" X 18" X 32"	77 lb.	1218FAUL-*1K0-1-100
1320FAUL Capacity 13 Ovid. Capacity 20	FAR PART 91 & 121	9" X 18" X 32"	62 lb.	1320FAUL-*190-1-100
	FAR PART 135	9" X 18" X 32"	73 lb.	1320FAUL-*130-1-100
	JAR-OPS1	9" X 18" X 32"	67 lb.	1320FAUL-*1J0-1-100
	JAR-OPS1/135	9" X 18" X 32"	78 lb.	1320FAUL-*1K0-1-100
1421FAUL Capacity 14 Ovid. Capacity 21	FAR PART 91 & 121	9 ½" X 18" X 32"	67 lb.	1421FAUL-*190-1-100
	FAR PART 135	9 ½" X 18" X 32"	80 lb.	1421FAUL-*130-1-100
	JAR-OPS1	9 ½" X 18" X 32"	72 lb.	1421FAUL-*1J0-1-100
	JAR-OPS1/135	9 ½" X 18" X 32"	84 lb.	1421FAUL-*1K0-1-100
1522FAUL Capacity 15 Ovid. Capacity 22	FAR PART 91 & 121	9 ½" X 18" X 32"	68 lb.	1522FAUL-*190-1-100
	FAR PART 135	9 ½" X 18" X 32"	81 lb.	1522FAUL-*130-1-100
	JAR-OPS1	9 ½" X 18" X 32"	73 lb.	1522FAUL-*1J0-1-100
	JAR-OPS1/135	9 ½" X 18" X 32"	85 lb.	1522FAUL-*1K0-1-100

*SEP Kit configuration defines type of ELT and applicable regulation as shown below.

Example 1: -230 (Dual Frequency w/ FAR Part 135 compliant SEP Kit) Example 2: -3K0 (Triple Frequency w/ JAR-OPS1 and FAR Part 135 compliant SEP Kit)

•1=No ELT •2=Dual Frequency •3=Triple Frequency •4=Triple Frequency/GPS¹ •5=Triple Frequency/GPS¹ w/ voice

¹Upon Availability

CAR Survival Equipment Packages are also available for WINSLOW Models 46FAUL through 1522FAUL by special request.